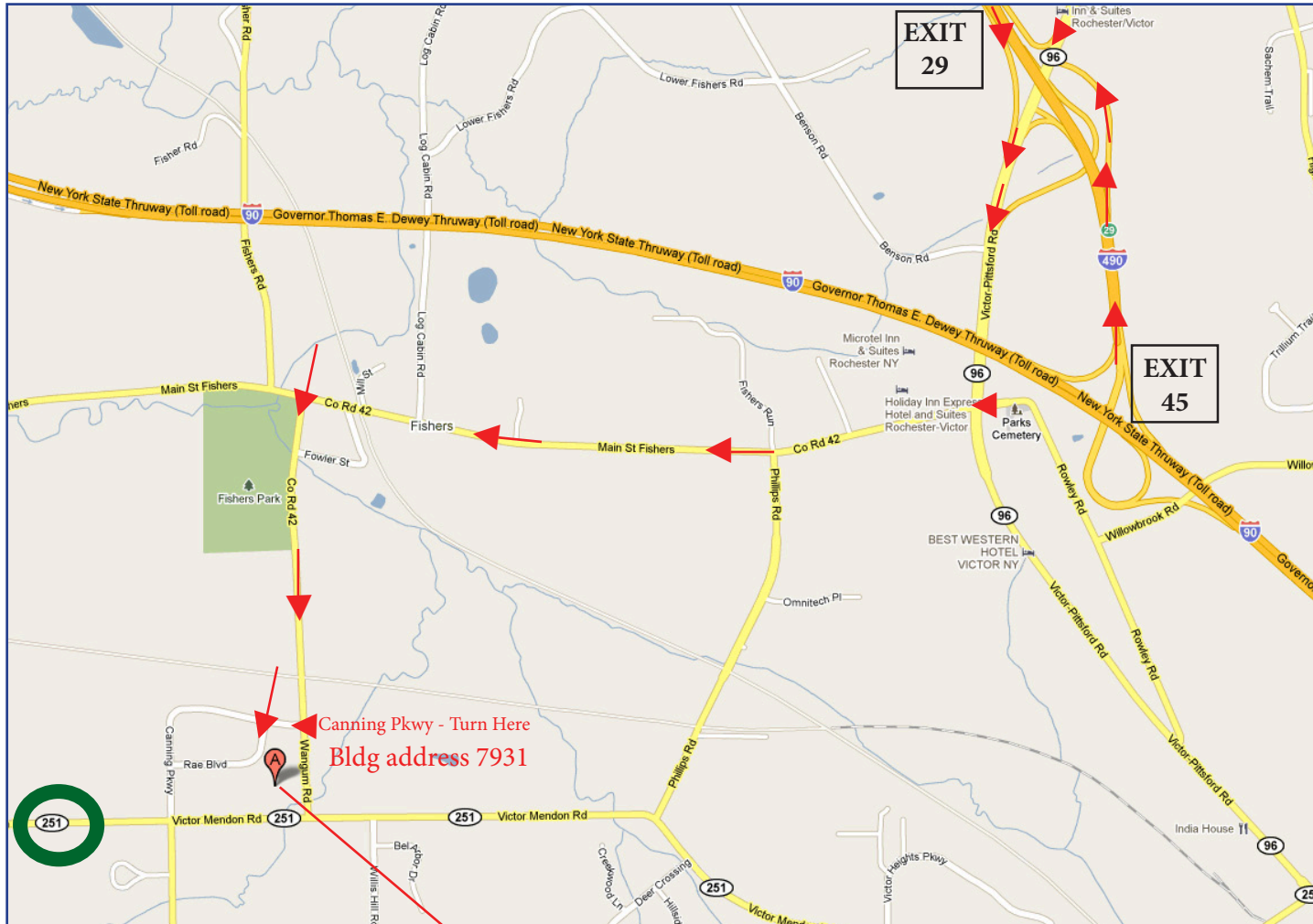


Day Automation

dayautomation.com

Map and Directions to:
7931 Rae Blvd
Victor, New York 14564
585-924-4630



From NYS Thruway:
Exit 45 Rochester/Victor Exit
Stay in Right Lane for Toll Booth
First Exit on Right -Victor
Turn Left on Rt 96 S - Proceed 0.5 miles
Turn Right at First Traffic Light
Main St Fishers Rd (*Dennys/Chilis on Corner*)
1.3 miles into Fishers -
Watch your speed
Turn Left on County Rd 42 (*Wangum Rd*) 0.6 miles to
Turn Right on Canning Pkwy - 500ft
Turn First Left Rae Blvd
at curve turn left into parking lot
Bldg Address 7931.
Park at Day Automation Training Center
reserved slots on side of building

From Rt 490E:
Exit 29 - Last Exit before Toll
Rt 96 S - Proceed 0.5 miles
Turn Right at First Traffic Light
Main St Fishers Rd (*Dennys/Chilis on Corner*)
1.3 miles into Fishers -
Watch your speed
Turn Left on County Rd 42 (*Wangum Rd*)
0.6 miles to
Turn Right on Canning Pkwy
500ft to
Turn First Left Rae Blvd
at curve turn left into parking lot
Bldg Address 7931
Park at Day Automation Training Center
reserved slots on side of building

From the South, West and Southeast
From Routes 15, 15A, 64, 21 and 86 connect to
Route 251 (circled in Green) to Wangum Road,
From Routes 14, 89, 96, and 81 follow NYS
Thruway directions above.

**Training Center
Information Desk:**
800-836-0969

585-924-4630

Trainers:

John Malbone 315-374-4085

Jeff Day 585-202-2182



**Day Automation Training
Center Entrance**

GPS Coordinates:
42° 59' 53" N
77° 28' 15" W